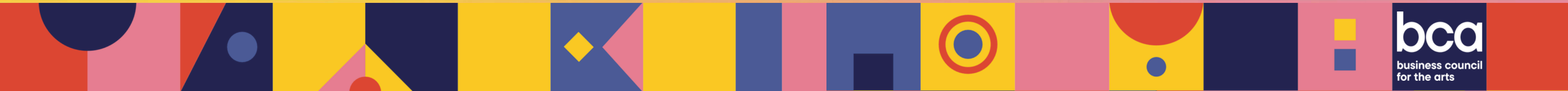
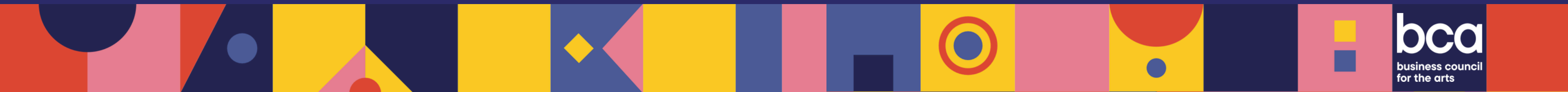


welcome



Doodle & Pass

Let's get the creativity flowing!



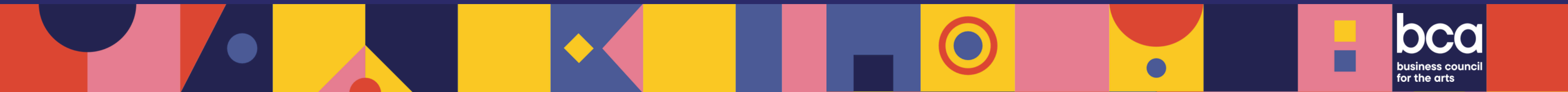
on my
own
time™

Liaison
Introductions

name | company | role | goals

Program Overview

On My Own Time™ is an art and literary competition where employees can share what they create on their own time with each other and North Texas!



OMOT promotes

creativity

connection

company
culture

employee
talent

inclusion

networking

visibility

OMOT promotes

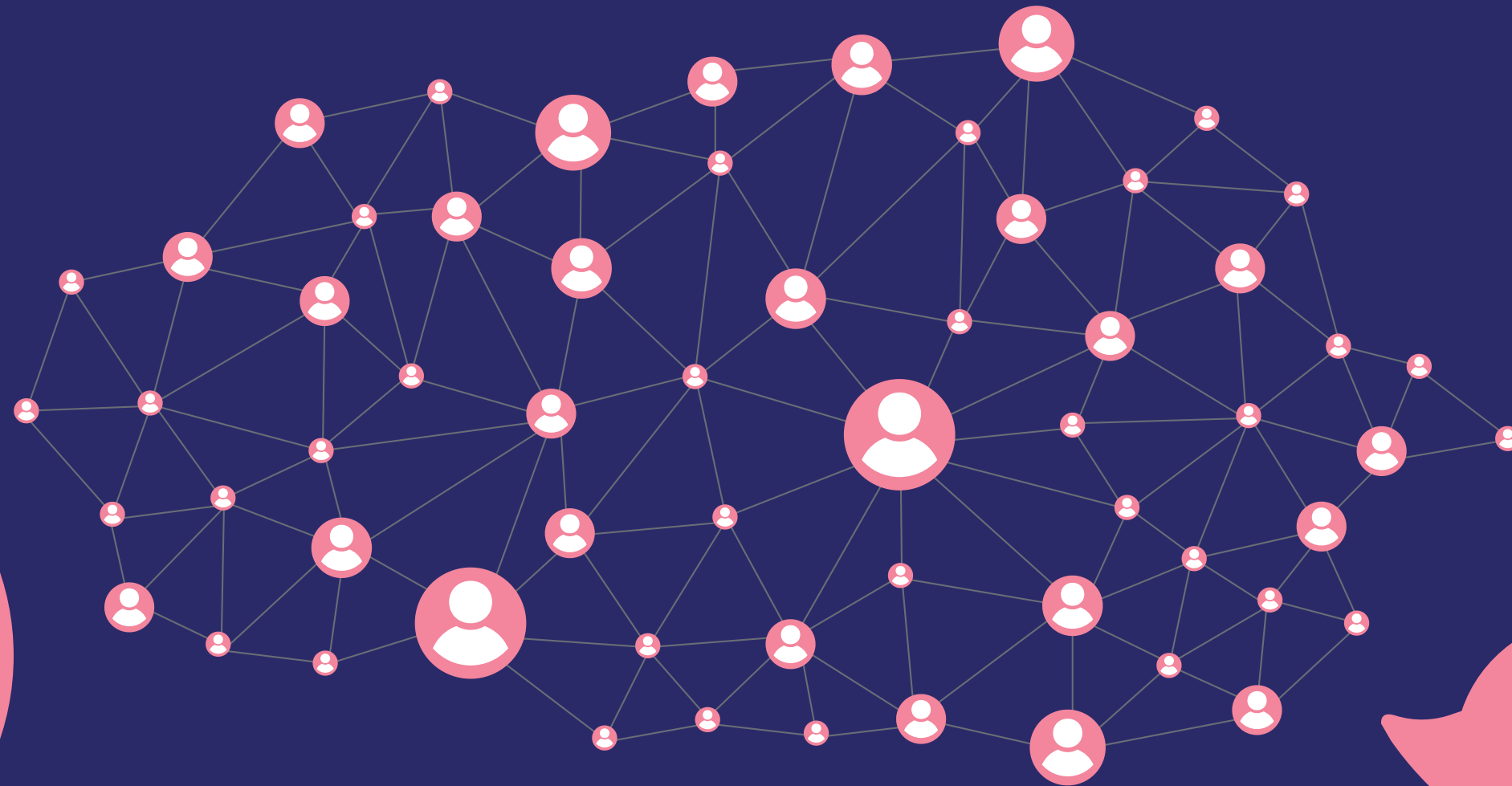
creativity



OMOT promotes

creativity

connection



common ground
found between
departments and
hierarchies

OMOT promotes

creativity

connection

company
culture

"On My Own Time is a fantastic way to share creativity in the workplace. Art speaks to the audience - it inspires, supports, and brings people together. OMOT provides an opportunity for more social interaction in the office - for a positive working environment and an inclusive culture."

- UT Southwestern Participant

OMOT promotes

creativity

connection

company
culture

employee
talent

"I think it's a great opportunity. The fact that my employer gives me the opportunity and the free time to do whatever I want and really express myself is the best. The best thing I could do... Go do it and follow your dreams. Follow your passions, what you want to do, and it's a great opportunity. I am thankful for the opportunity."

-Guillermo Rios, Dallas College

OMOT promotes

creativity

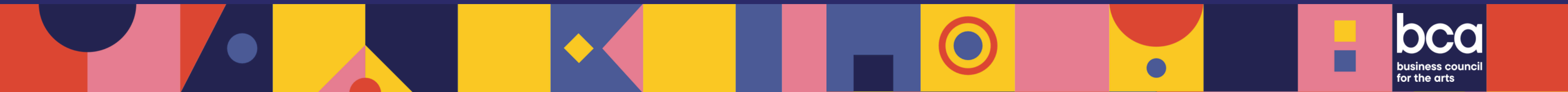
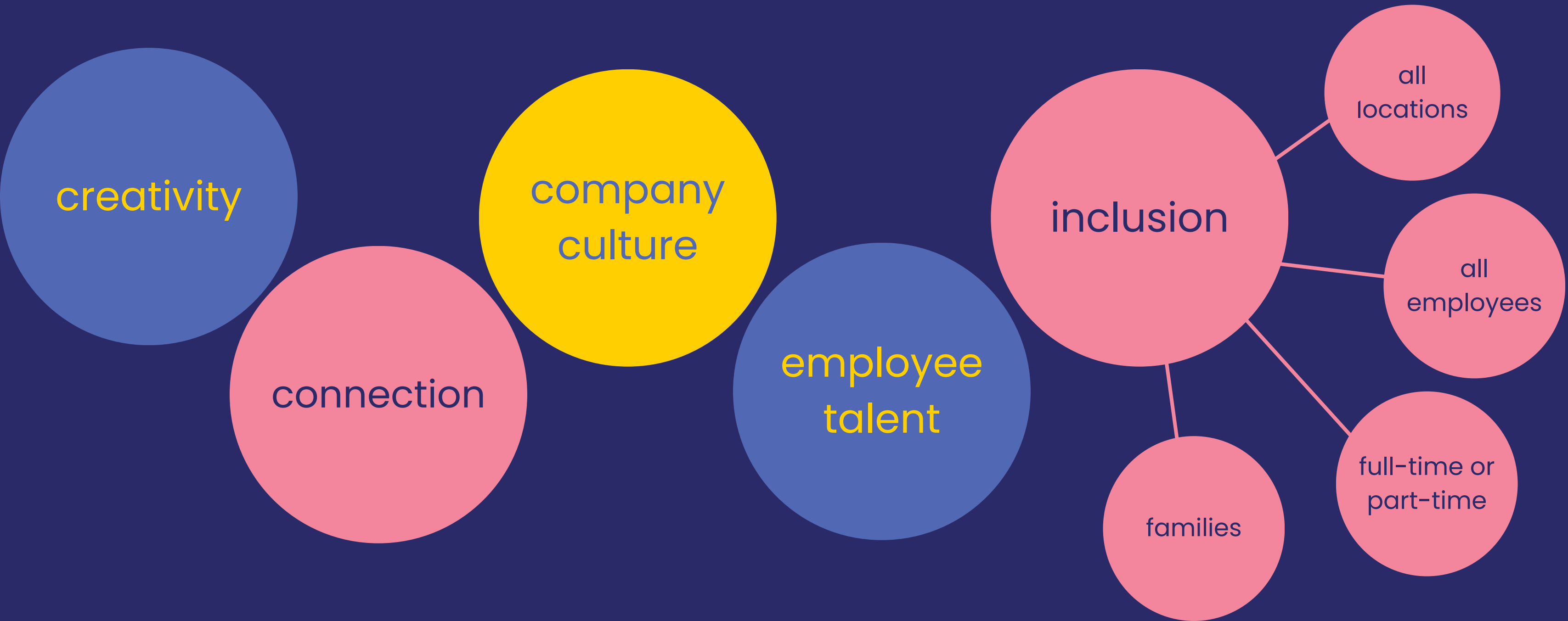
company
culture

connection

employee
talent



OMOT promotes



OMOT promotes

creativity

connection

company
culture

employee
talent

inclusion

networking

Dallas
College

NorthPark
Center

new!
Workshops

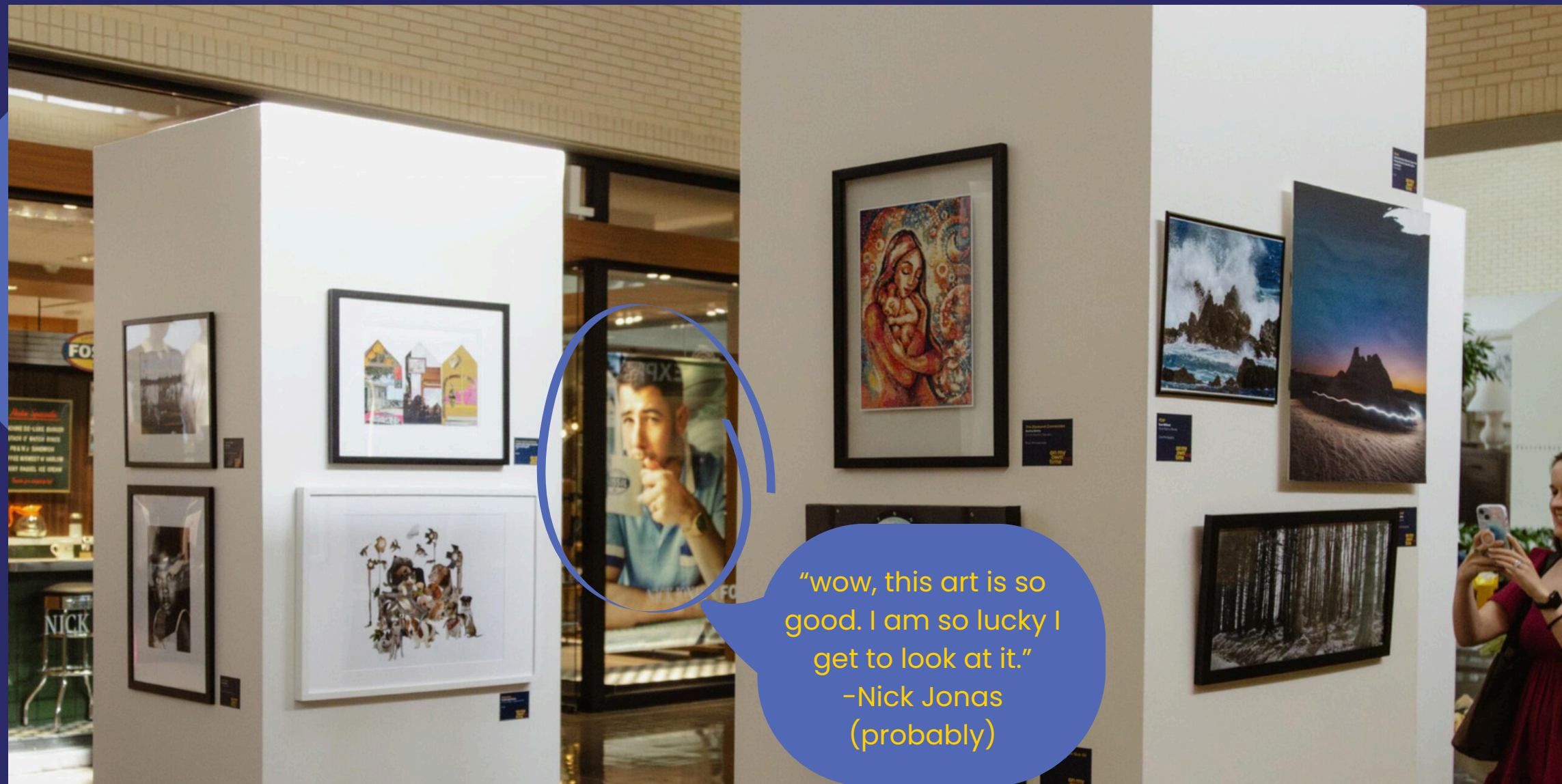
OMOT promotes



visibility

With hundreds of thousands of visitors passing through NorthPark Center, your company will gain meaningful visibility and recognition.

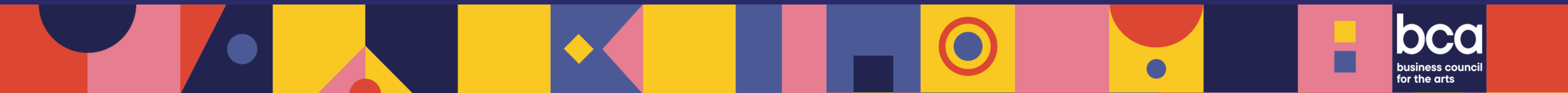
OMOT promotes



"wow, this art is so good. I am so lucky I get to look at it."
-Nick Jonas (probably)

visibility

With hundreds of thousands of visitors passing through NorthPark Center, your company will gain meaningful visibility and recognition.



Role of the Liaison

01

**Point of
Contact**

02

**Encourage
Participation**

03

**Resource
for
Employees**

Role of the Liaison

01

**Point of
Contact**

Role of the Liaison

01

Point of Contact

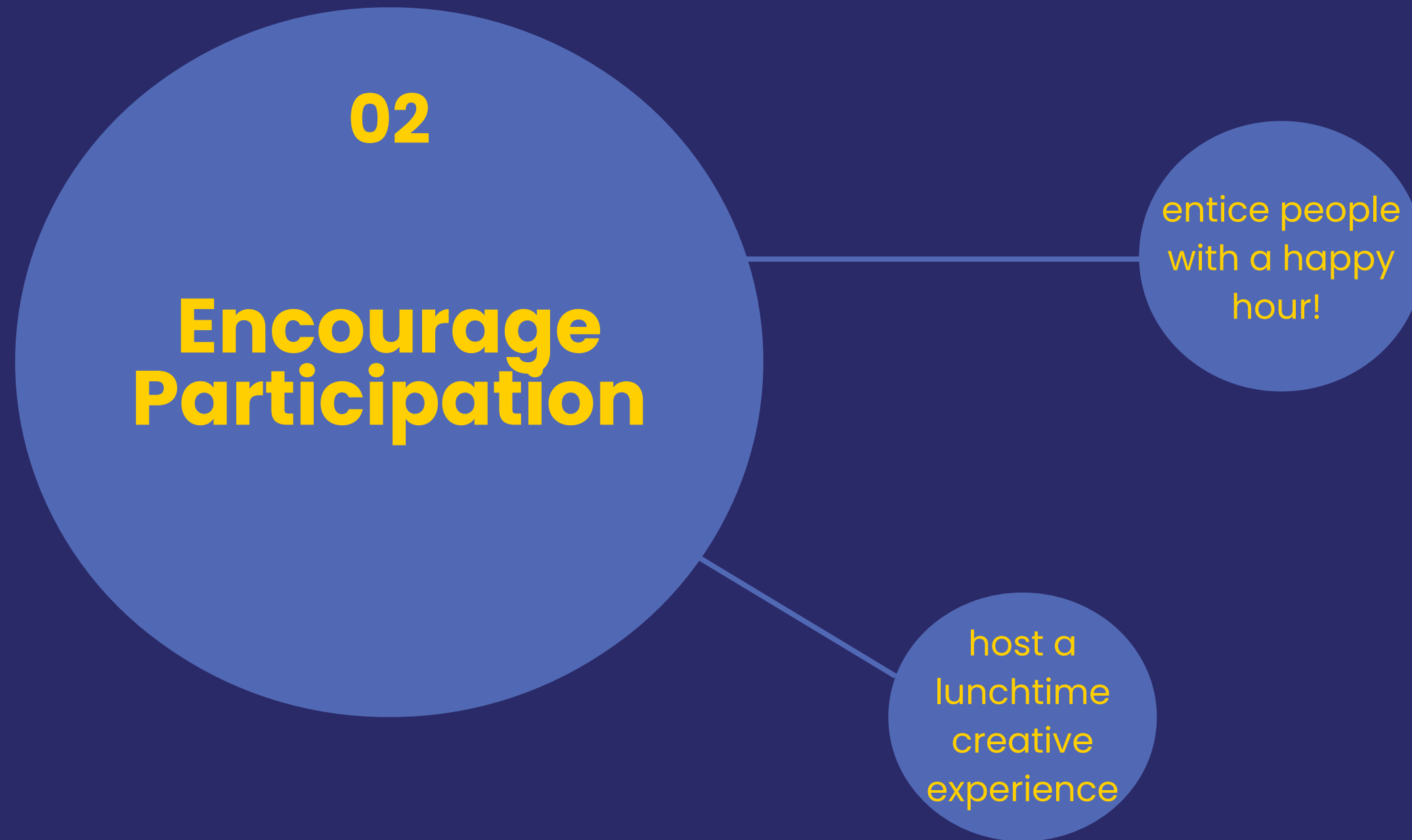
- send along promotional materials
- forward the submission link from BCA to your employees
- confirm a time with BCA for internal jurying

Role of the Liaison

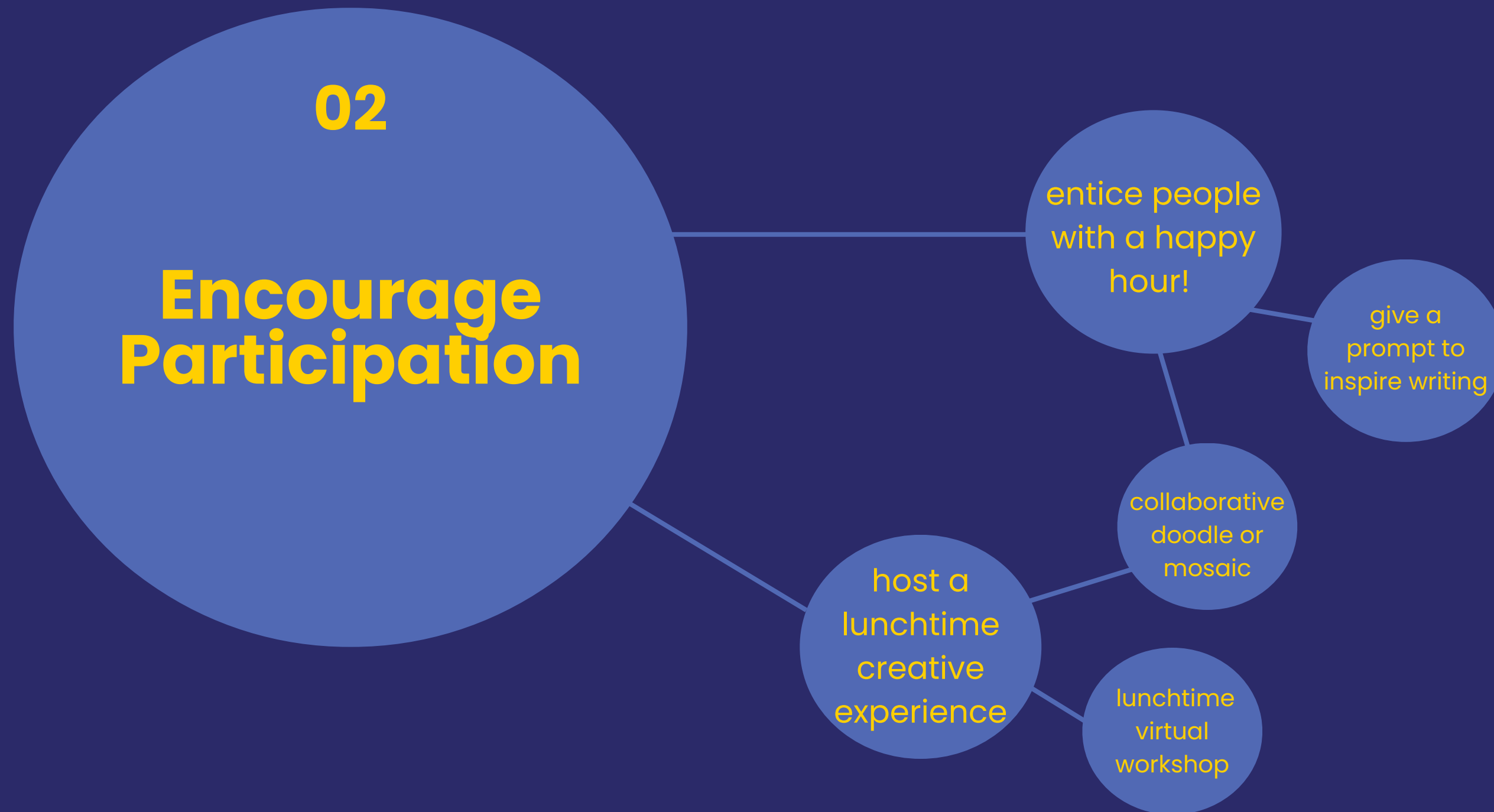
02

**Encourage
Participation**

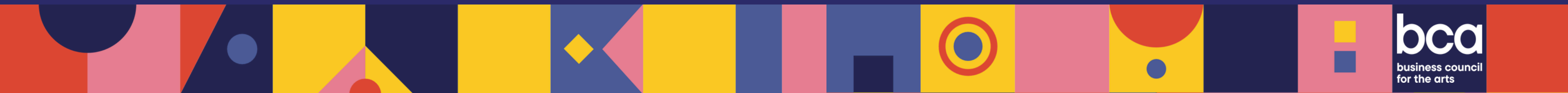
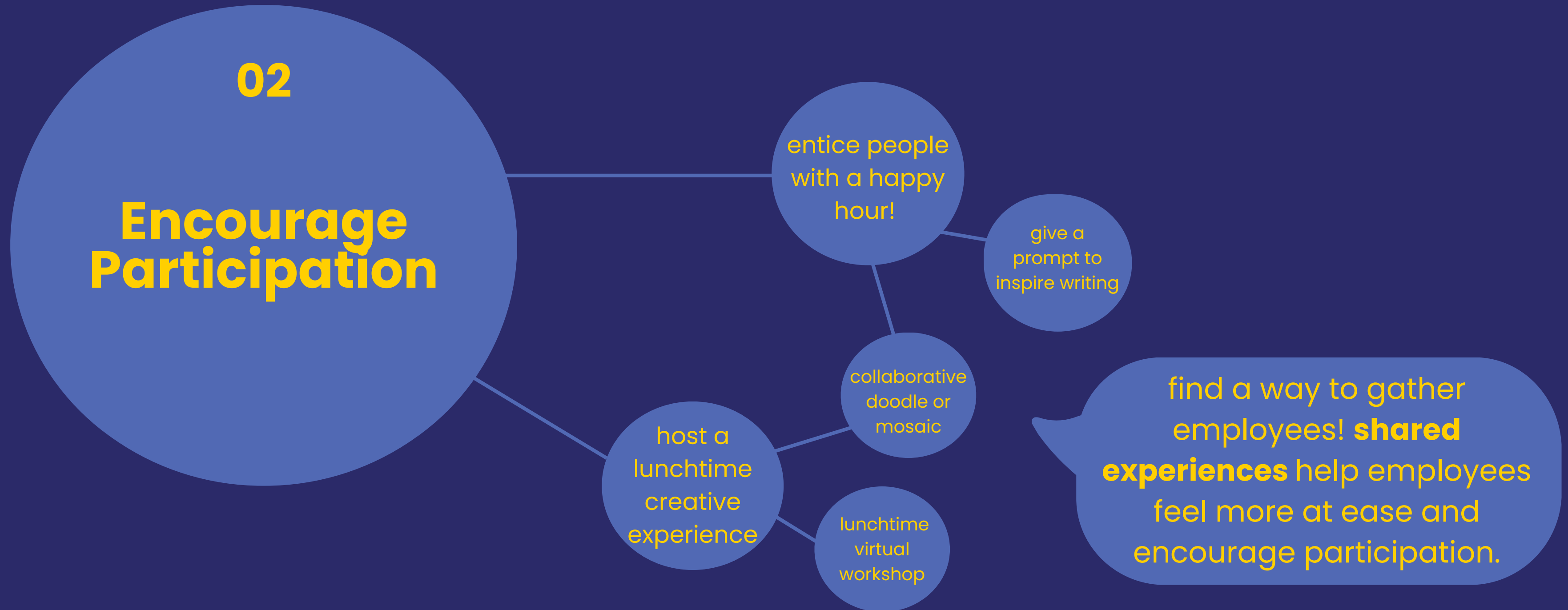
Role of the Liaison



Role of the Liaison



Role of the Liaison



Role of the Liaison

02

Encourage
Participation

get leaders in the
company involved



Role of the Liaison

incentives

02

**Encourage
Participation**

make it a
competition



Role of the Liaison

incentives

02

**Encourage
Participation**

recognition in
annual
reports



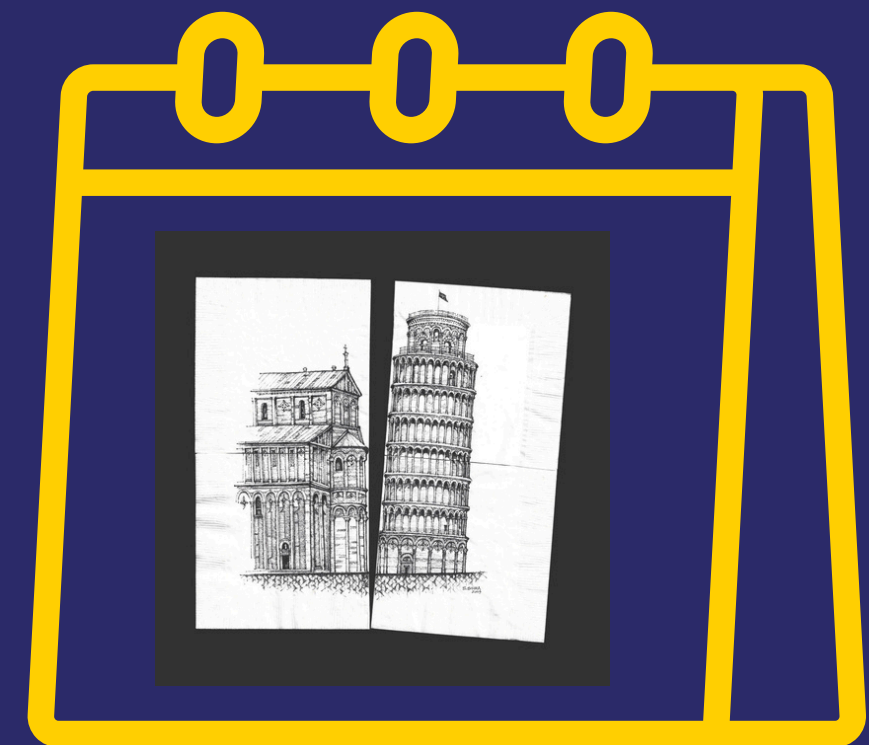
Role of the Liaison

incentives

02

**Encourage
Participation**

company
calendars
featuring art



Role of the Liaison

incentives

02

Encourage Participation

offer prizes



Role of the Liaison

02

Encourage Participation

family members
can also
participate in
OMOT

at the discretion
of the liaison

must be over 18 to
exhibit at NorthPark

Role of the Liaison

02

Encourage Participation

family members
can also
participate in
OMOT

at the discretion
of the liaison

must be over 18 to
exhibit at NorthPark



thank you to Corgan for this
absolute masterpiece

Role of the Liaison

02

Encourage
Participation

NEW WORKSHOPS!!!!

in partnership with Dallas College

David Newman
*Monotype &
Monoprint*

Caroline Wilson
*Virtual Gesture
Drawing*



Role of the Liaison

02

Encourage
Participation

NEW WORKSHOPS!!!!!!

in partnership with Dallas College

make it a date night,
a family night or a
team building
exercise!

David Newman
*Monotype &
Monoprint*

Caroline Wilson
*Virtual Gesture
Drawing*

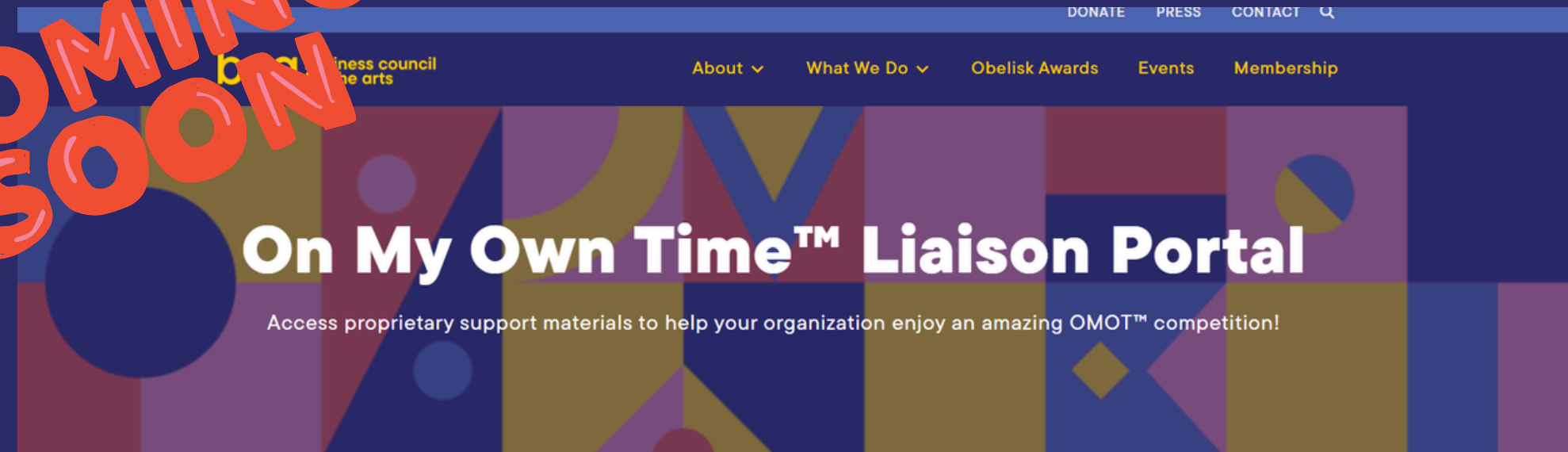
stream it in a
conference
room during
lunch!



Role of the Liaison

Resource
for
Employees

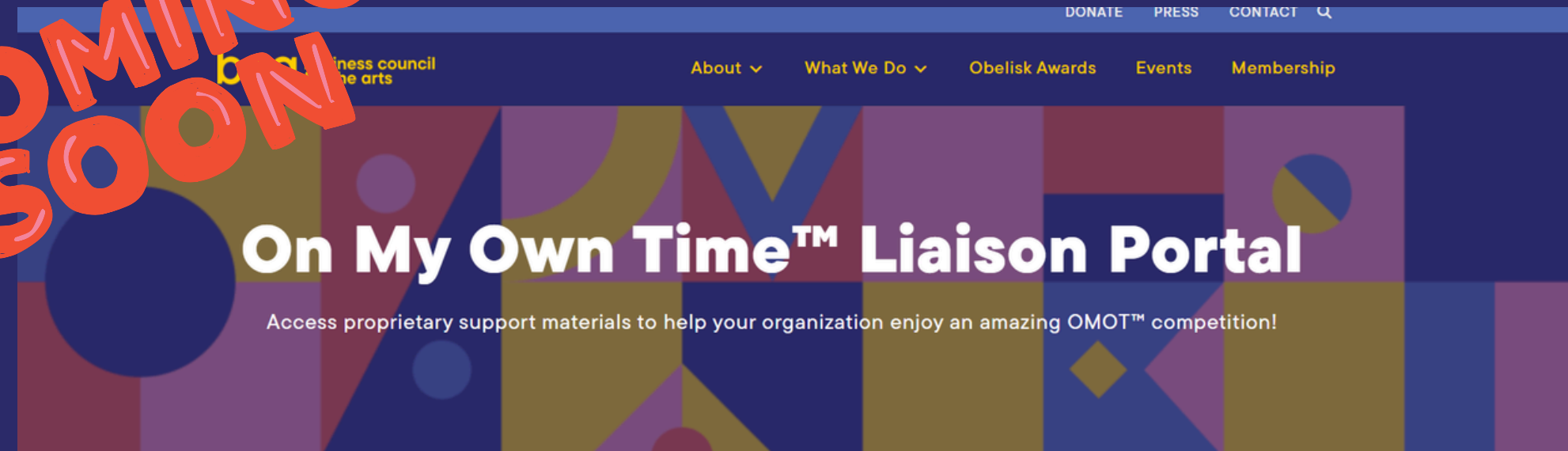
COMING
SOON



Role of the Liaison

Resource
for
Employees

COMING
SOON



submission
links

liaison
toolkit

marketing
materials

answered
questions

BCA &
OMOT
logos

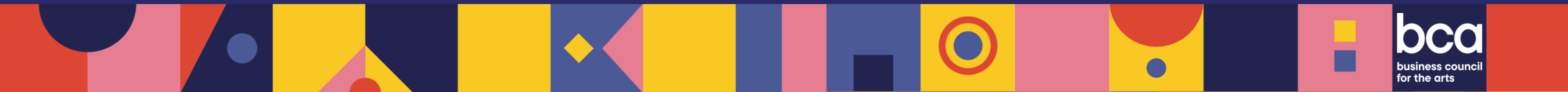
Visual Arts Categories

I'm new!

Painting	Oils, acrylics, watercolors, and other paints
Drawing/Printmaking/Works on Paper	drawings, prints, and collage on paper
Black & White Photography	Images created with a digital or film camera printed in black and white; Must be "straight" photography, with only minor digital enhancements
Color Photography	Images created with a digital or film camera printed in color; Must be "straight" photography, with only minor digital enhancements
Digital Art	Includes art that is made using digital technology
AI Art	Artwork that uses any amount of AI technology
Sculpture	Objects such as castings, constructions, and assemblages
Ceramics, Wood & Glass	Objects such as carvings, woodturning, pottery and fired clay, mosaic, and glass – not including sculpture
Jewelry & Metal	Objects such as jewelry and metal works – not including sculpture
Mixed Media	Works using more than one medium
Textiles & Fiber	Objects utilizing fabric, yarn, thread, or textiles
Video/Film/Animation	Film, documentary, and 2D or 3D animation of any kind
Corporate Collaboration	Visual art created by 3 or more employees (e.g., a collaborative painting, mosaic, sculpture, or collage)

Literary Categories

10-Word Story	A story containing precisely 10 words (punctuation not counted)
Creative Non-Fiction	Non-fictional writing of no more than 650 words that uses factual information (e.g. essays, biographies, memoirs, etc.)
Fictional Short Story	A fictional story of no more than 650 words
Open Verse Poetry	Poetry of any style or structure; no more than 500 words
Corporate Collaboration	Short story of no more than 650 words that are written by 3 or more employees.
AI Literature	Literary works that include any amount of AI technology and are no more than 650 words. Prompts required as part of submission.



Notes for Submissions

divisions

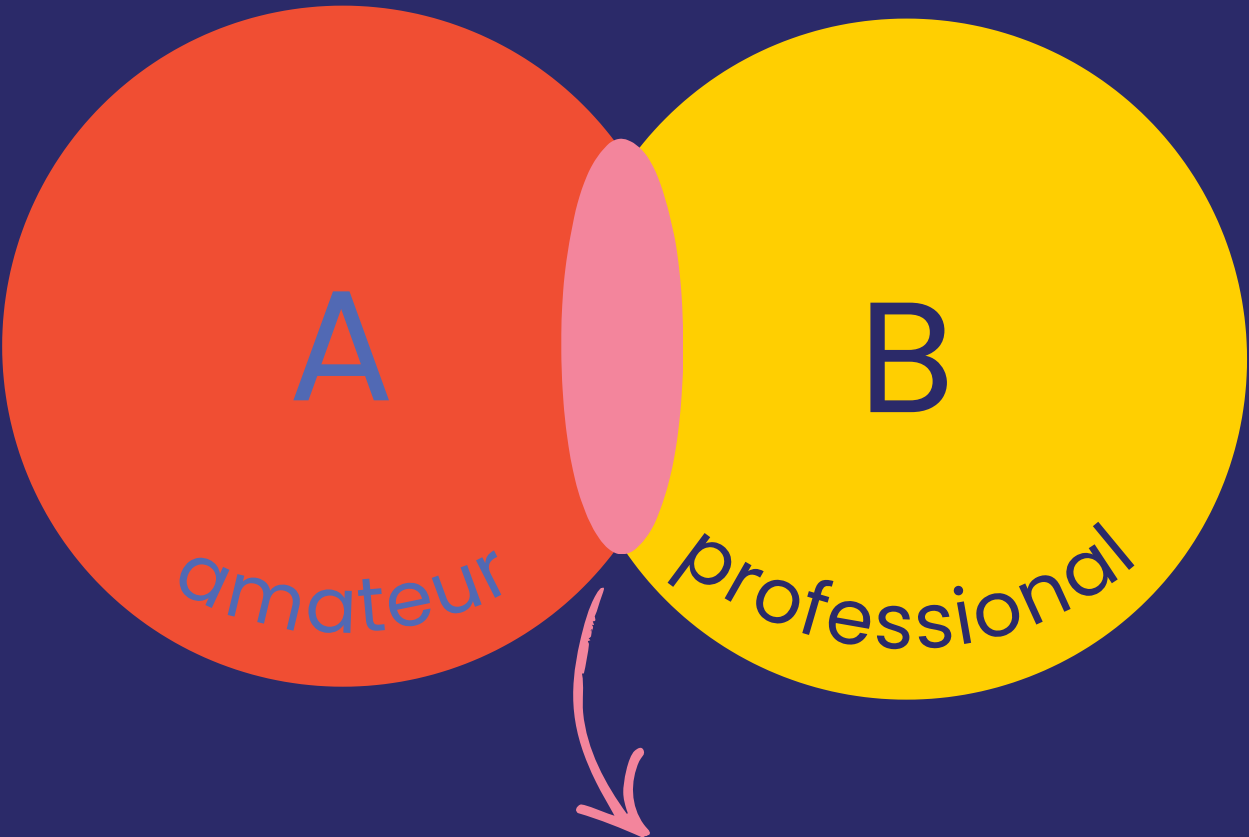
file format

office
appropriate

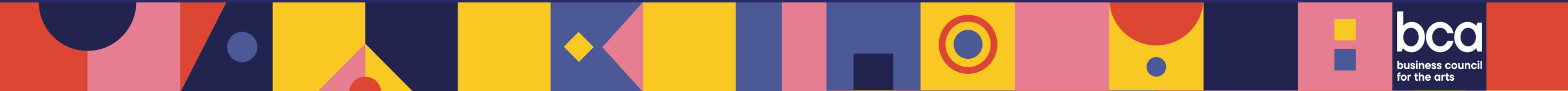
employee
eligibility

Notes for Submissions

divisions

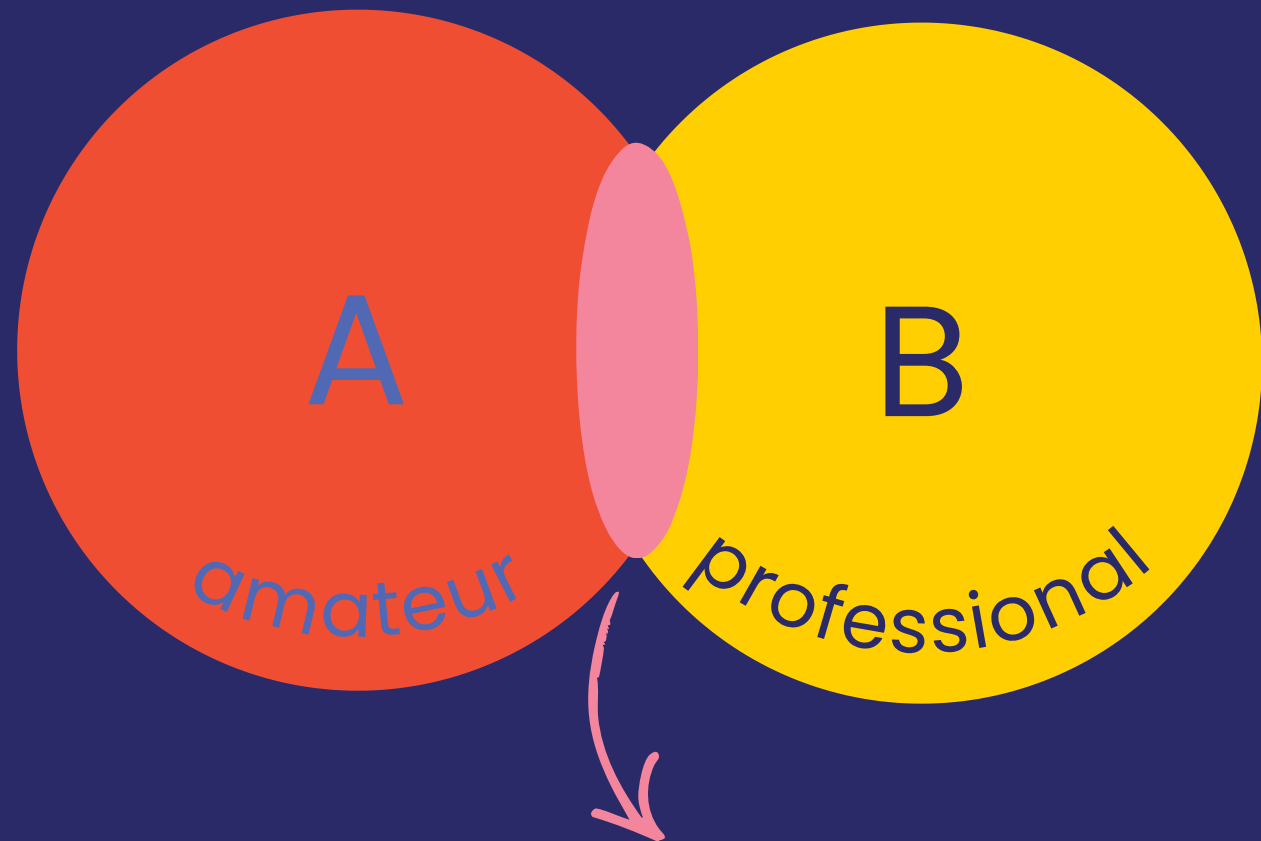


you can be an amateur in one category,
but a professional in another



Notes for Submissions

divisions



you can be an amateur in one category,
but a professional in another

Professionals answer **yes** to these questions

- the artist routinely sells his/her work in the category he/she is exhibiting
- artist has had a professional, curated or gallery exhibition
- artist is employed in an art-related job and the category he/she is entering is related to his/her profession



Notes for Submissions

how to name

"Title_FirstName_LastName_Company"



file format

Notes for Submissions

how to name

"Title_FirstName_LastName_Company"

file format

BCA's very own Stacie Adams was exhibited at the Regional Art Show when she worked at Axxess!



Chaos_Stacie_Adams_Axxess

Notes for Submissions

file format

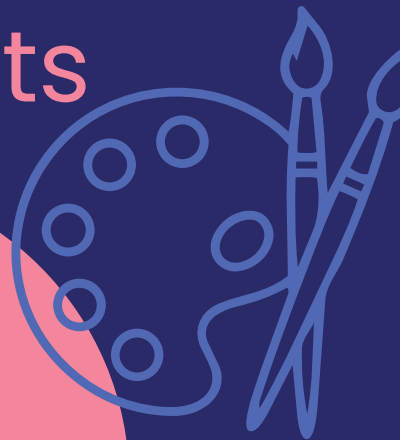
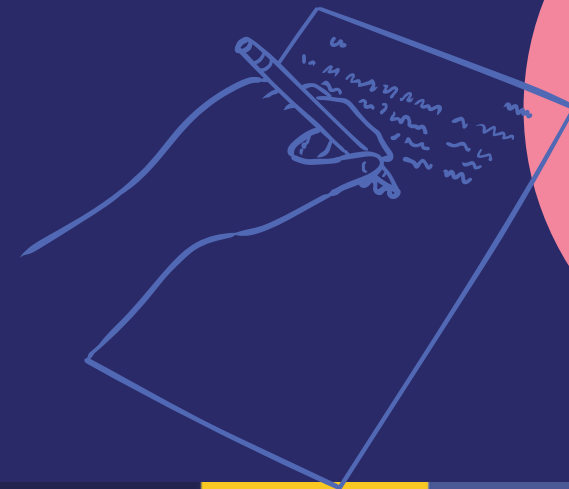
file size

literary arts

visual arts

below 25MB on
a PDF

between
1500-2500
pixels wide
.jpeg



Notes for Submissions

office
appropriate

Notes for Submissions

office
appropriate



As an OMOT
Liaison, you may
omit work
inappropriate for
your workplace
setting.

Notes for Submissions

office
appropriate

As an OMOT
Liaison, you may
omit work
inappropriate for
your workplace
setting.

any work containing offensive depictions
of nudity, profanity, illegal activities, or
negative depictions of social , religious,
ethnic, or political groups or individuals
will not be exhibited at the regional level

Notes for Submissions

employee
eligibility

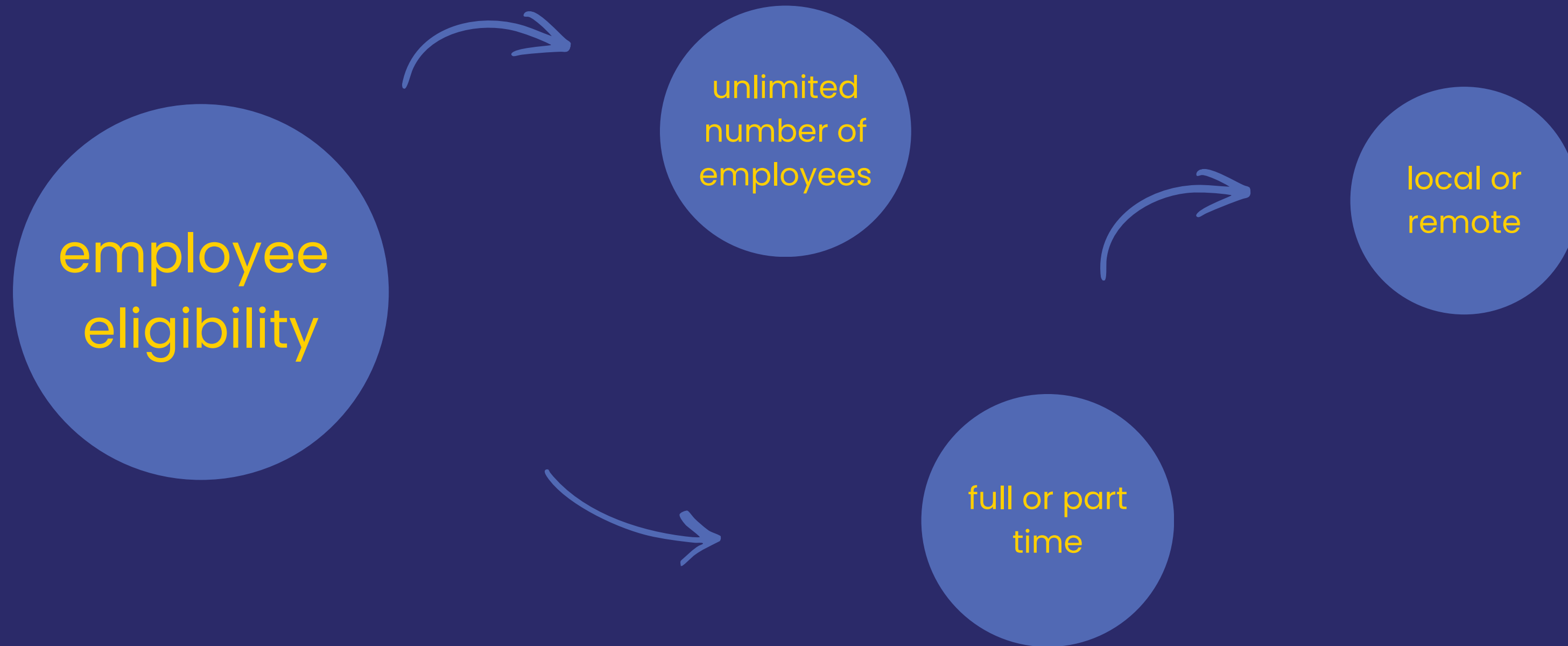
Notes for Submissions



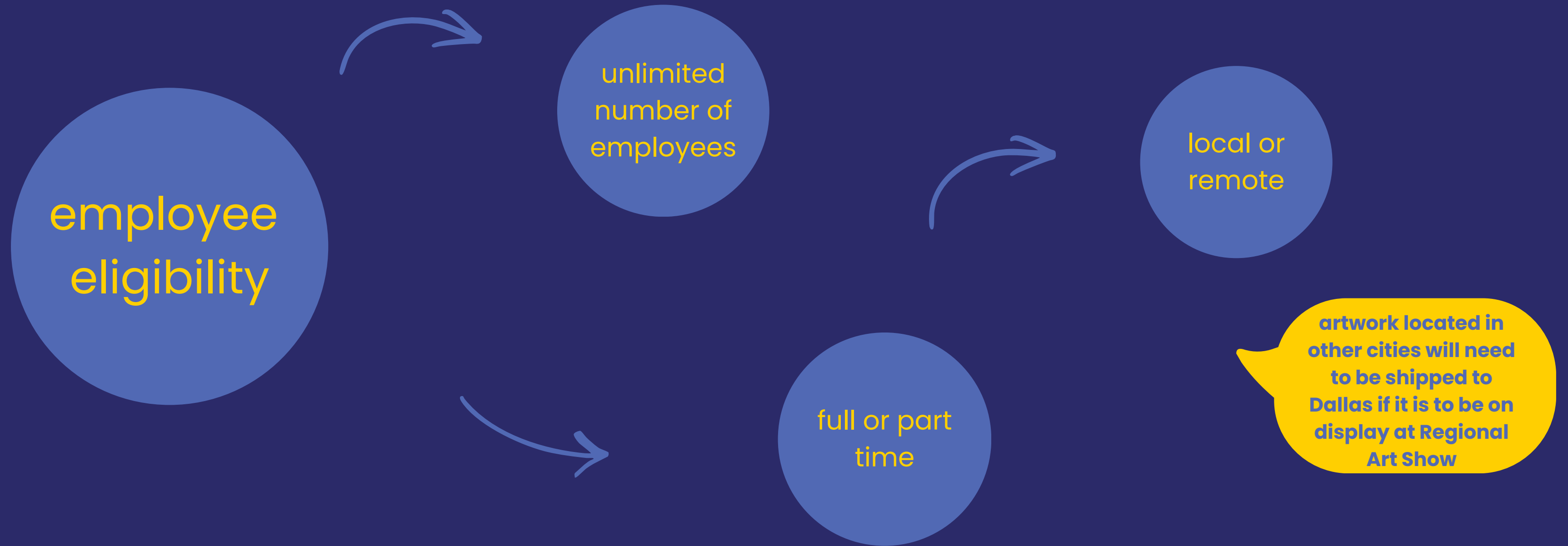
Notes for Submissions



Notes for Submissions



Notes for Submissions



Road to Regional Art Show

**after
submission,
liaisons can
choose to host
an internal
show.**

Road to Regional Art Show

after submission, liaisons can choose to host an internal show.

this can be a dedicated space to hang the work

it can also simply be a lunchtime hour where the works are laid out on tables

Road to Regional Art Show

after submission, liaisons can choose to host an internal show.

this can be a dedicated space to hang the work

it can also simply be a lunchtime hour where the works are laid out on tables

the goal is to celebrate the creativity of your employees - that can look different across all participating companies!

Road to Regional Art Show

after submission, liaisons can choose to host an internal show.

internal jurying will take place

Road to Regional Art Show

after submission, liaisons can choose to host an internal show.

internal jurying will take place

BCA arranges for DFW arts professionals to jury the works of your employees
virtual or in person

Road to Regional Art Show

after submission, liaisons can choose to host an internal show.

internal jurying will take place

selected winners will prepare artwork for exhibition

labeled with artist name, company, category, and title

secured with wire hanging

Road to Regional Art Show

after submission, liaisons can choose to host an internal show.

internal jurying will take place

selected winners will prepare artwork for exhibition

note: artwork must be manageable in scale. cannot be larger than 3 feet wide or 4 feet tall

Road to Regional Art Show

after submission, liaisons can choose to host an internal show.

internal jurying will take place

selected winners will prepare artwork for exhibition

artists deliver artwork to NorthPark

Road to Regional Art Show

after submission, liaisons can choose to host an internal show.

internal jurying will take place

selected winners will prepare artwork for exhibition

artists deliver artwork to NorthPark

option 1:
September 11,
5-7pm

option 2:
September 12,
10am - 12pm

Regional Art Show

save the date!



 NorthPark Center

Regional Art Show

save the date!



networking

celebrate your employees and company

view great art and get to speak with the artists

 NorthPark Center

Literary Night

save the date!



 Dallas College

Literary Night

save the date!



OCT 15

**Event &
Reception**

6:00 - 8:00 pm

writers invited

liaisons
encourage
attendance

networking

 **Dallas College**

MAY

11th – Office Hours, 12 – 12:40 pm

19th – Workshop with Caroline Wilson:
The Art of Gesture Drawing, 12-1 pm

26th – In-house visual arts jurying
availability due

JUNE

8th & 9th – Workshop with Guillermo Rios:
*Transforming Art into Wearable
Expression*, 6 pm (English & Spanish)

16th – Workshop with Hillary Gallego:
Blackout Poetry, 12 –1 pm; Company
profiles & logos due

18th – Office Hours, 12 – 12:40 pm

26th – Workshop with David Newman:
Monotypes & Monoprints, 6pm

JULY

6th – Office Hours, 12 – 12:40 pm

7th – Literary & Visual Arts Submission
Deadline

13th – In-house shows begin

14th – In-house jurying begins

AUGUST

18th – In-house jurying ends

SEPTEMBER

11th – Art drop-off, 5 –7pm

12th – Art drop-off, 10 am – 12 pm

16th – Exhibition Reception at
NorthPark Center

OCTOBER

5th – Regional Art Show ends &
exhibition deinstalled

15th – Literary Night Event at Dallas
College

thank you!



Libby Bush

Programs Manager

✉ libby.bush@ntbca.org

☎ 972.730.7844