

Welcome!

Grab lunch and start with your activity sheet!

On the activity sheet, cross out as many words as possible while still being able to describe **OMOT** to a colleague.



Stacie Adams

Business Council for the Arts, CEO



On My Own Time™

Liaison Introductions

Name | Company | Position | Goal



Program Overview

On My Own Time™ is an art and literary competition where employees can share what they create on their own time with each other and North Texas!

OMOT PROMOTES:

Creativity

Culture

**Employee
Talent**

Inclusion

Connection



Visual Categories

Visual Art Categories

Category	Description
2D Works on Paper and Canvas	Paintings, drawings, watercolors, collages, prints
Black & White Photography	B&W "straight" photography with minor edits
Color Photography	Color "straight" photography with minor edits
Digital Art	Art created digitally
AI Art	Any art using AI – prompt required
Sculpture	Castings, constructions, assemblages
Ceramics, Wood & Glass	Pottery, woodturning, mosaic, fired clay, glasswork
Jewelry & Metal	Artistic jewelry and metalwork
Mixed Media	Works using multiple materials
Textiles & Fiber	Weaving, quilting, embroidery, knitting, wearable art, etc.
Video/Film/Animation	Any form of film, video, or animation
Corporate Collaboration	Visual art made by 3+ employees collaboratively

Literary Categories

Literary Art Categories

Category	Description
10-Word Story	A story using exactly 10 words (punctuation excluded)
Creative Non-Fiction	Essays, memoirs, biographies (≤ 650 words)
Fictional Short Story	Fictional stories (≤ 650 words)
Open Verse Poetry	Poetry of any style (≤ 500 words)
Corporate Collaboration	Group-written stories (3+ employees, ≤ 650 words)
AI Literature	Writing that includes AI input (prompt required, ≤ 650 words)

What Does a Liaison Do?

**Point of
Contact**

**Encourage
Participation**

**Resource
for
Employees**



Important Dates

june

2nd : Internal Jury Dates Due
11th: Zoom “Office Hours” 11-1
16th: Company Profiles &
Logo Due

july

9th: Artist Submissions Due
15th: Zoom “Office Hours” 11-1

august

4th: Jurying Begins
15th: Jurying Ends
22nd: Winners Announced

september

2nd & 3rd: Art Drop Off at
NorthPark Center
17th: Reception at NorthPark
Center 5:30-7:30 PM

october

5th: NorthPark Center Exhibition
Closes
6th: Art Pick Up 6:30-8:30 PM
9th: Literary Night, Dallas College,
6:00 - 8:00 PM

I'm on
paper too!



OMOT Portal

- Best resource for OMOT Liaisons
- Continuously updated
- Here you will have access to the OMOT Liaison Portal which includes
 - Program Information
 - Entry Forms
 - Logos to use
 - FAQ Answers
 - CHAT FEATURE!



Bookmark Me!



Promotional Materials

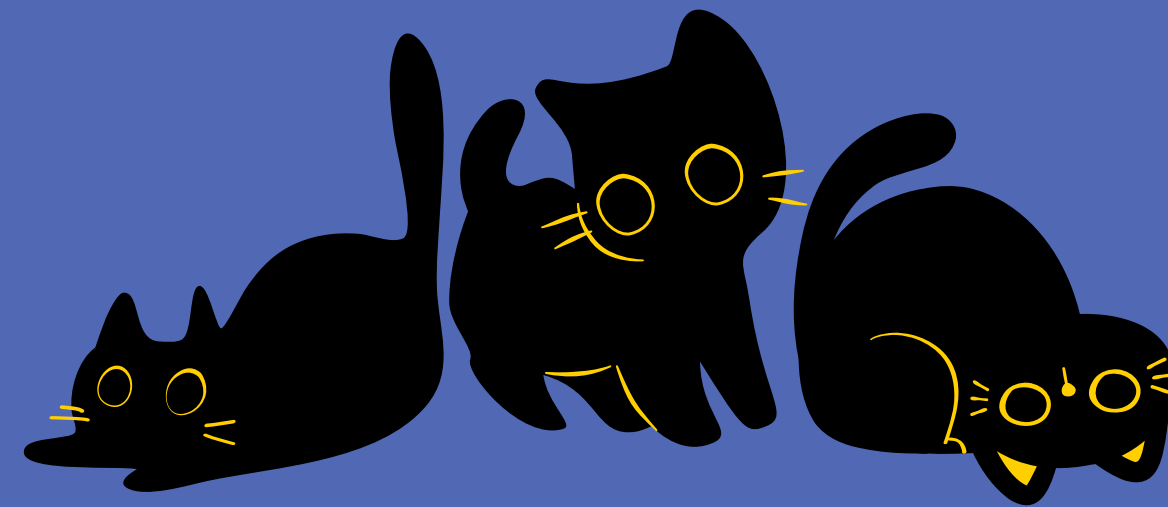
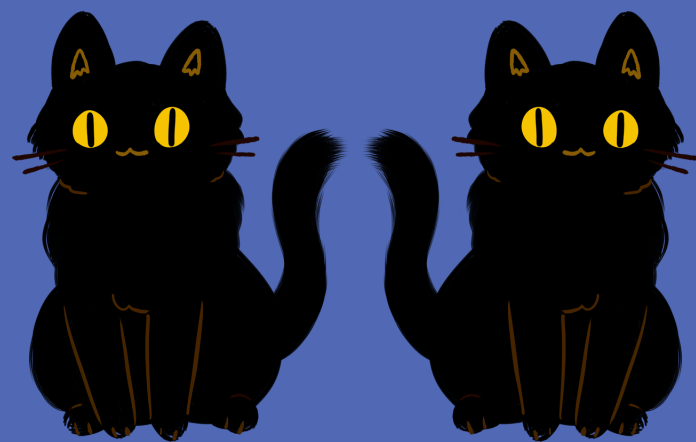
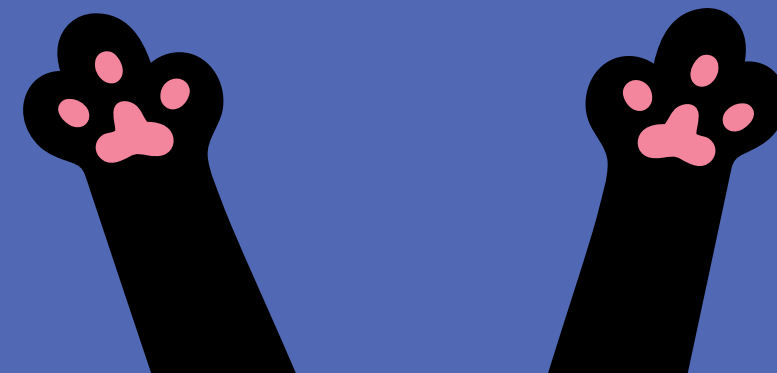
- To help promote OMOT BCA will provide: flyers, email templates, & social images
- You may use your own designs, but be sure to include the official On My Own Time™ or BCA logo, as OMOT is a trademarked BCA program.



on my
own
time™

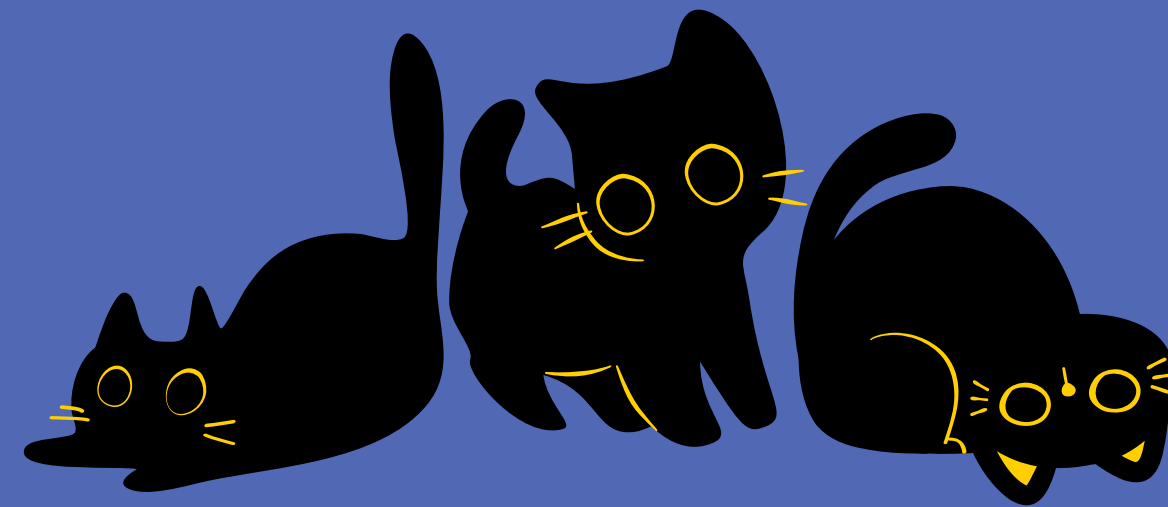
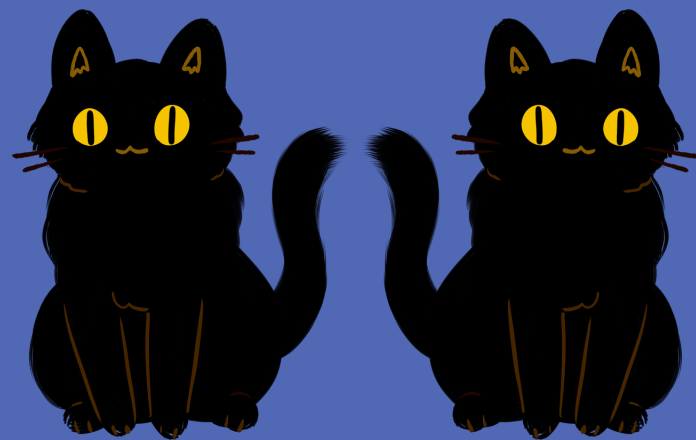
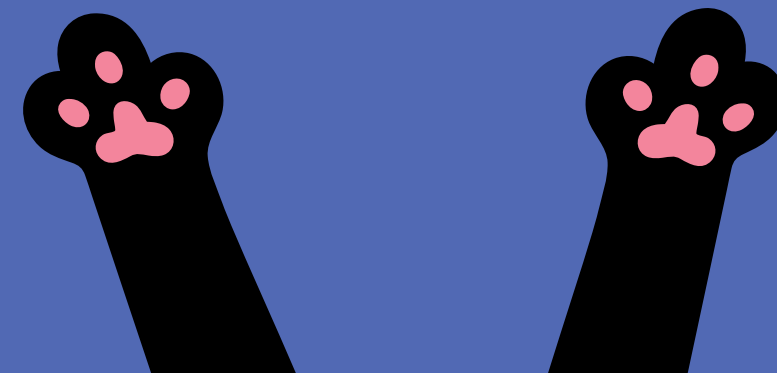
bca
business council
for the arts

Encouraging Participation



Encouraging Participation

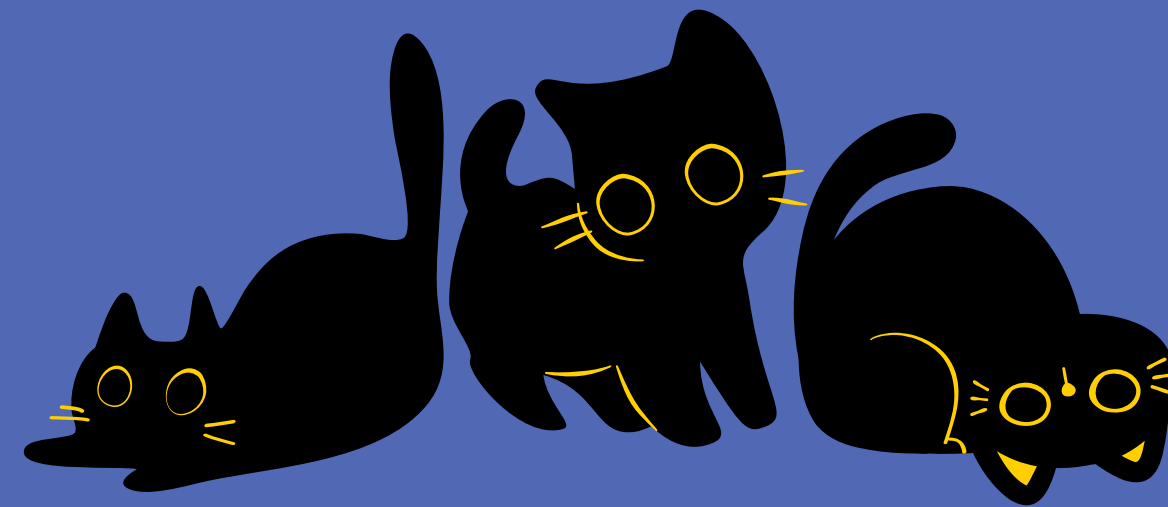
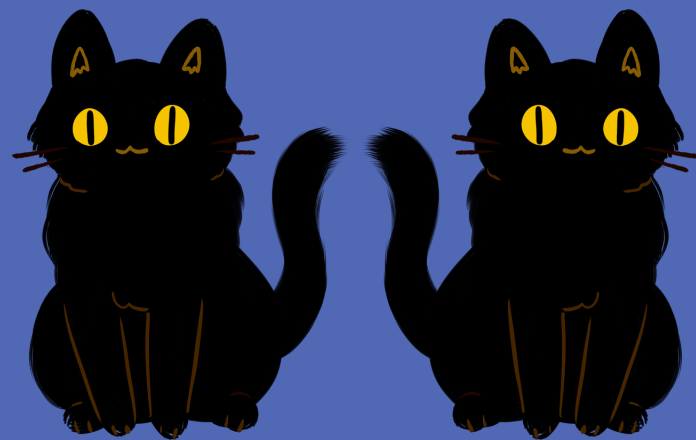
Make sharing
personal art less
scary!



Encouraging Participation

Make sharing
personal art less
scary!

Leadership leads
the way!

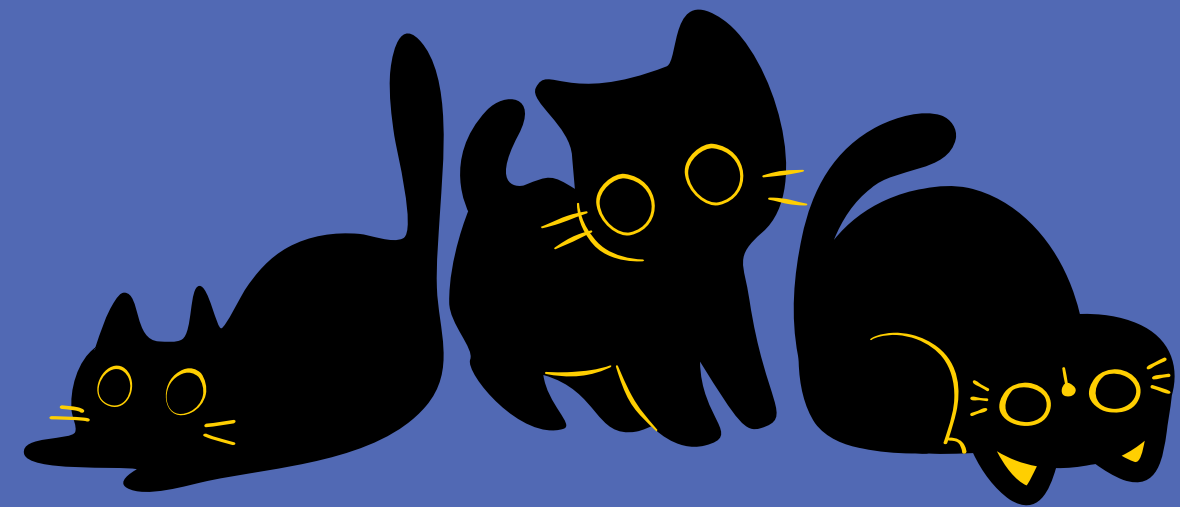


Encouraging Participation

Make sharing
personal art less
scary!

Leadership leads
the way!

Incentivize your
colleagues!



Encouraging Participation

Make sharing
personal art less
scary!

Leadership leads
the way!

Incentivize your
colleagues!

Include families!

*No one under 18 is allowed to be
exhibited at NorthPark Center*



Encouraging Participation

Make sharing
personal art less
scary!

Leadership leads
the way!

Any tips from veterans?

Incentivize your
colleagues!

Include families!

*No one under 18 is allowed to be
exhibited at NorthPark Center*



Art @ Home



Notes for Submissions

- Division: A (Amateur) or B (Professional)
- File name must be "Title_FirstName_LastName_Company"
- Correct File Size:
 - Literary – below 25MB on a PDF
 - Visual – Must be between 1500–2500 pixels wide .jpeg
- Visual dimensions include framing



NorthPark Center Exhibition

Your art is
public art!

Art must be ready
for install!

Drop Off –
Strict timing!

Pick Up –
Strict timing!



Literary Night

Reception to
celebrate!

Readings of
finalists!

Networking
opportunity!

Dallas College!



Employee Eligibility

Unlimited Number of Participants

Local or Remote

Full or Part-Time

Family Members



Submission Guidelines

- As an OMOT Liaison, you may omit work inappropriate for your workplace setting.
- Any work containing offensive depictions of nudity, profanity, illegal activities, or negative depictions of social, religious, ethnic, or political groups or individuals will not be exhibited at the regional level.



Yes or No!



Vacation Pictures from the Summer!



Yes or No!



Vacation Pictures from the Summer!



Yes or No!



Nude Painting!

Yes or No!



Nude Painting!

Yes or No!



A Painting from Goodwill!



Yes or No!



A Painting from Goodwill!

Yes or No!



Handmade Earrings!



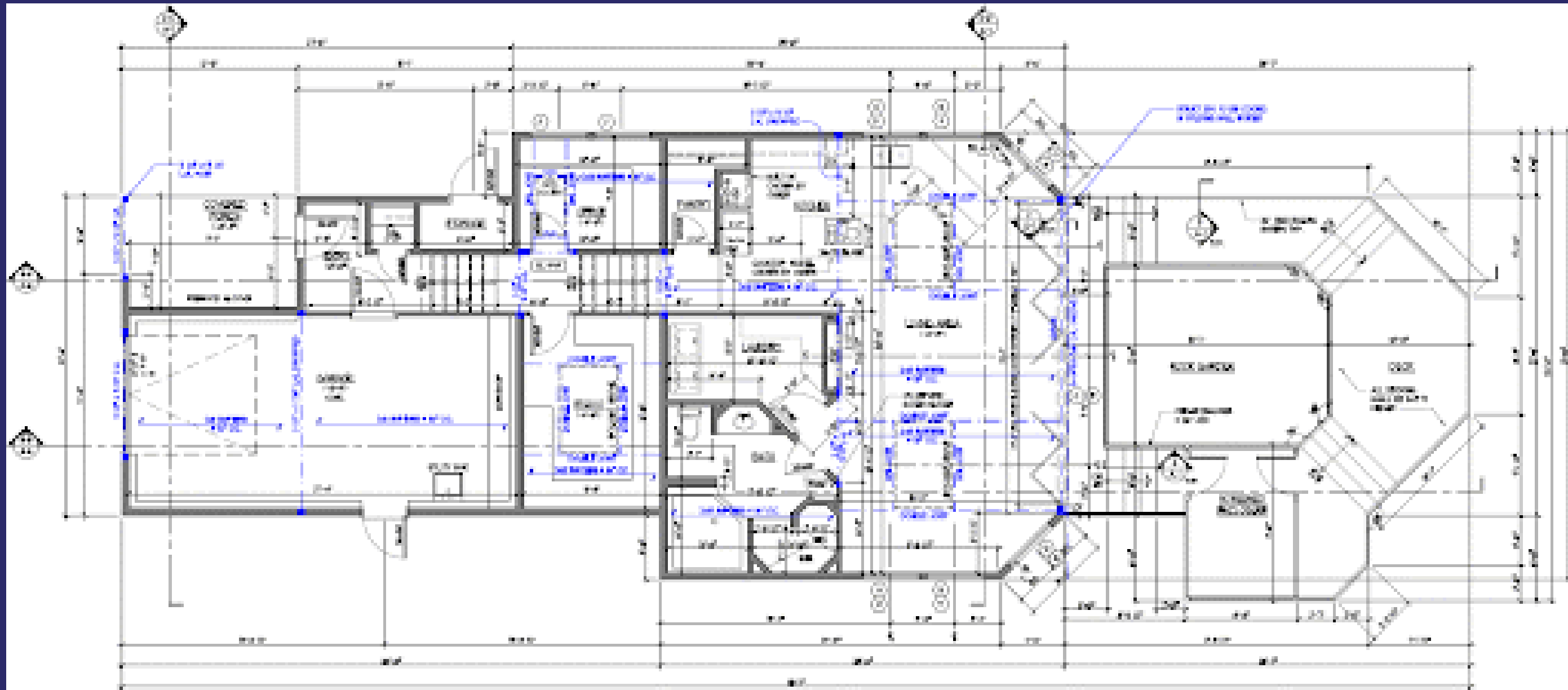
Yes or No!



Handmade Earrings!



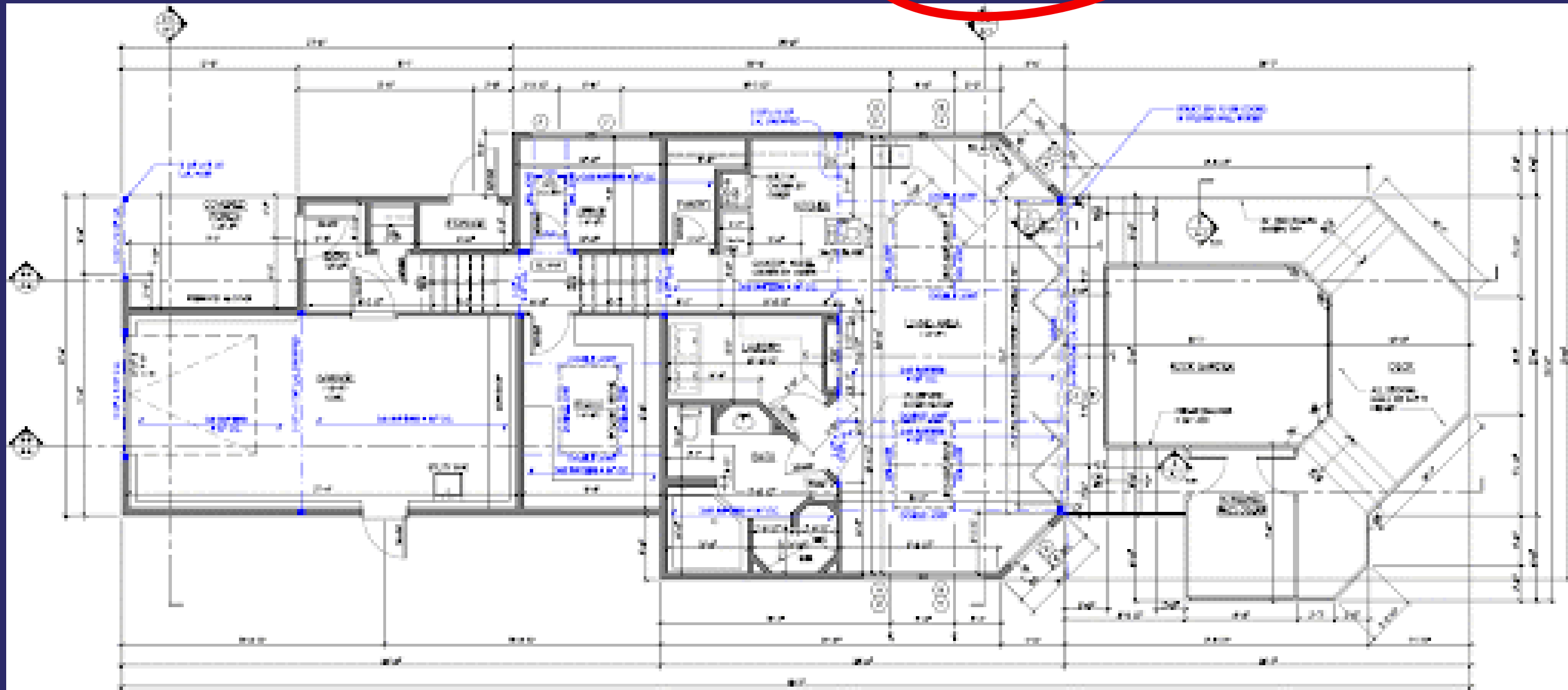
Yes or No!



A Work Project!



No!



A Work Project!

Yes or No!



Movie Prop Replica!

Yes or No!



Movie Prop Replica!

Yes or No!



Stop Motion Video!



Yes or No!



Stop Motion Video!



Questions?

Cassie Pierce
Programs Manager

✉ cassie.pierce@ntbca.org
🌐 www.ntbca.org

